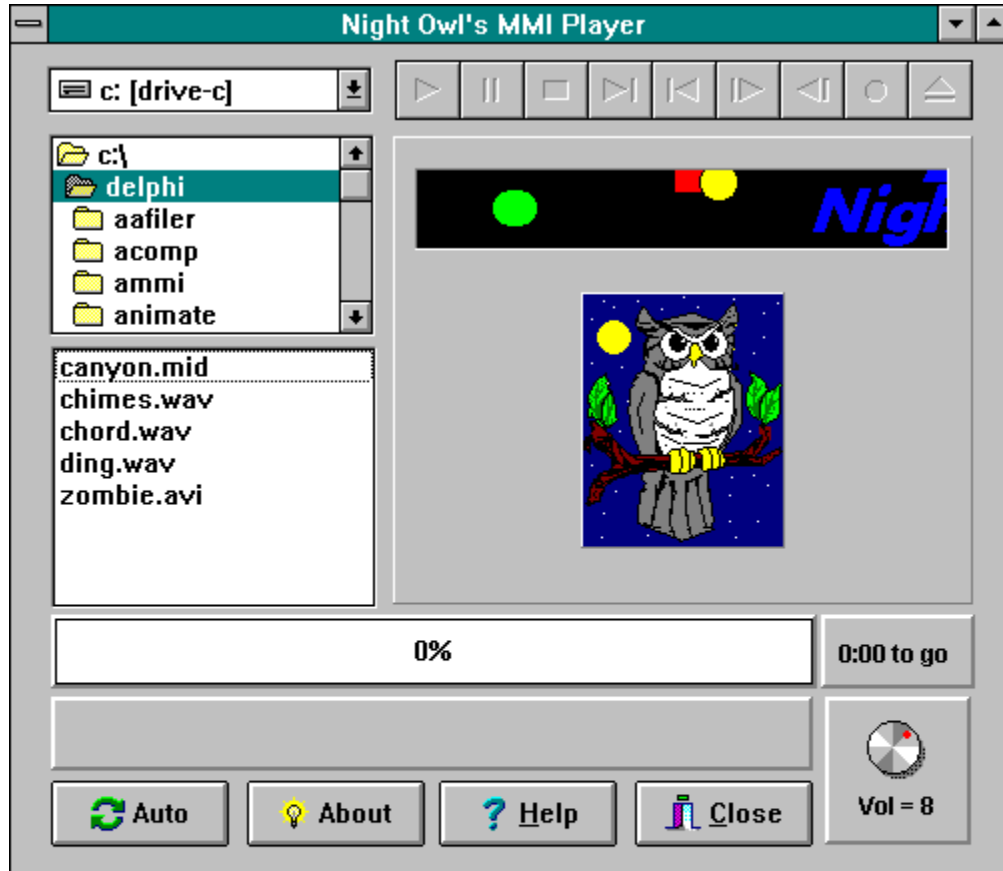


# Night Owl's MMI Player Help

## Playing Files in Sequence



## **Drive Selection Box**

Use the drive selection box to access the directory structure on any drive in your system by clicking on the target drive letter

## **Directory Selection Box**

Use the Directory Selection Box to access files in any directory in your system by double clicking on the target directory.

## **File Selection Box**

Use the File Selection Box to select AVI/MID/WAV files for playing by clicking on the target file name. You may then click on the green [play button](#) to start playing the file

## Play Button

The play button will turn green shortly after a playable file is selected. Click on this button to commence playing the file.

## Pause Button

This button will pause the playing of the file currently being played. Click the button again to continue playing.

## Stop Button

The stop button stops the player. It also halts the auto-play function if it is active.

## Next Button

The Next button moves to the end of the file.



## Previous Button

The Previous button moves to the beginning of the current file.

## Step Button

The Step button moves forward a number of frames if you are currently playing an AVI file.

## Back Button

The Back button moves back a number of frames if you are playing an AVI file.

## Not Used

These buttons are not used in this release.

## Play Progress

The play progress bar indicates the progress in playing the current file by moving the bar from left to right and by displaying the percentage of the file played. The remaining time to play is displayed in a box to the right of the progress bar.

## Active File Name

Displays the name of the file currently being played.

## Sound Volume Knob

Adjust the sound volume of file being played by rotating the knob with the mouse cursor or clicking on the knob.

## Auto Play Button

Click on the Auto play button to commence playing a group of selected files.



## About Button

Click on the About button for information on the NIGHTMMP program.

## Help Button

The Help button gets you here.

## Close Button

Click on the Close button to close and exit the NIGHTMMP program.

## Playing Files in Sequence

You may use the Night Owl MMI player to play a group of files in sequence. The files may be of mixed type such as AVI, MID, and WAV. To select a group of files for auto-playing, hold down the control key and then click on the file names you wish to play. An alternative means of selecting files is to drag the cursor bar down through a group of file names. Just remember to depress the control bar when selecting files or you de-select all selected files.

Once you have a group of files selected, click on the Auto button to commence playing. The files will be played in the sequence that they appear in the file box.



